

Developmental Course Sequence Analysis: A Snapshot of English Data

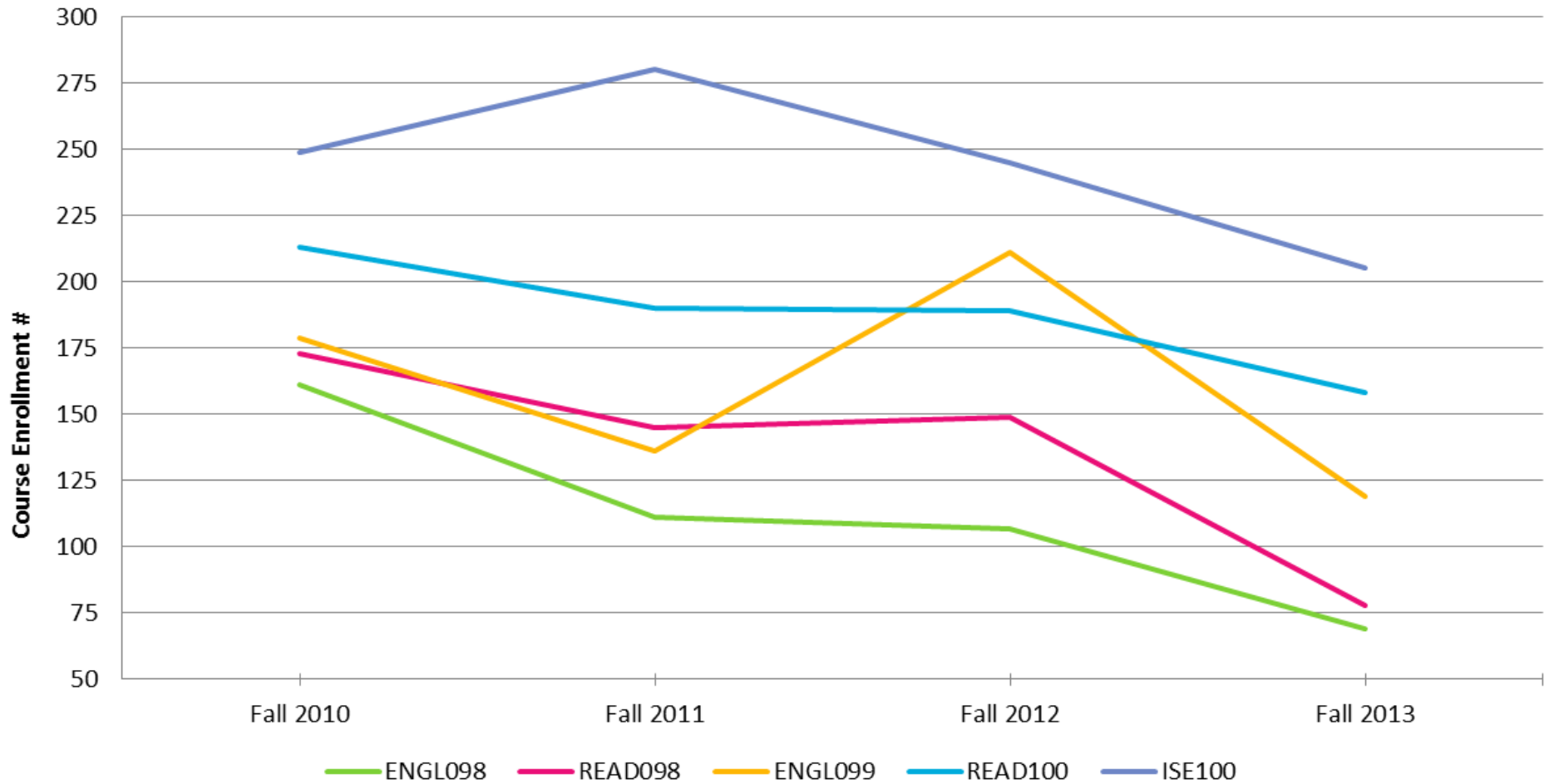
Prepared for:
UNM Gallup Campus

Prepared by:
Marie-Julienne,
Institutional Researcher

Drafted:
March 5, 2015



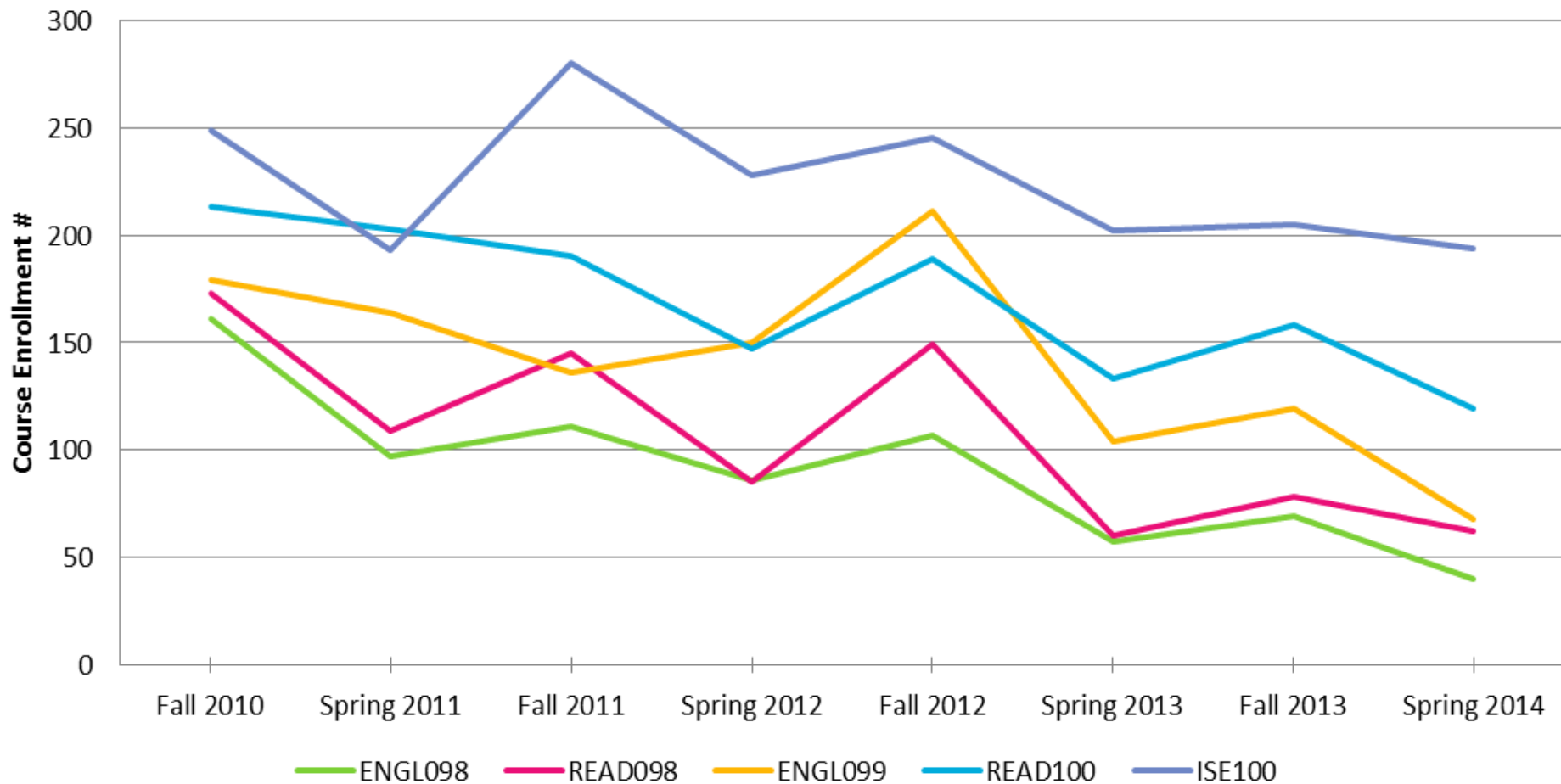
Developmental English Fall Enrollment Trend, 2010 - 2014



Source: Office of Institutional Research, UNM Gallup Campus. Drafted on March 5, 2015.

Remedial courses do not count toward graduation requirements. The COMPASS exam is used to place students in appropriate subject level, based on a range of scores. Student enrollment in English remedial courses has been on a steady decline over the past 4-years.

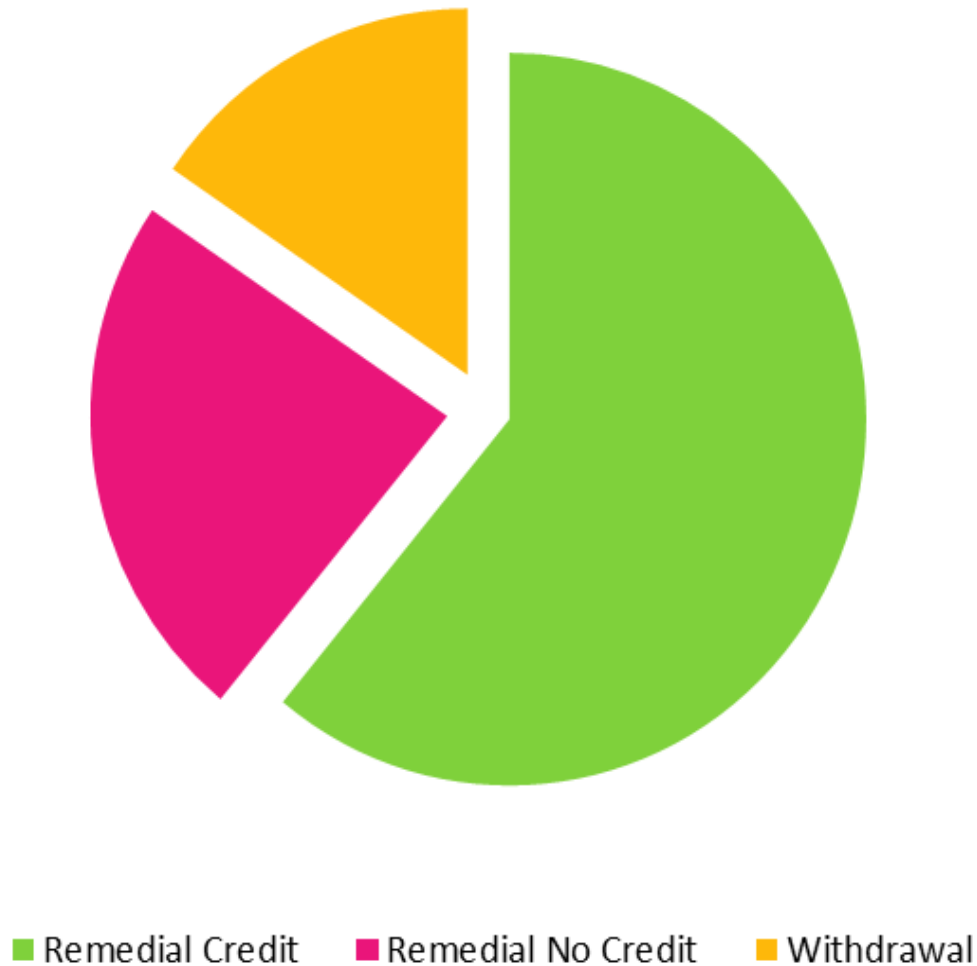
Developmental English Enrollment Trend, Fall 2010 - Spring 2014



Source: Office of Institutional Research, UNM Gallup Campus. Drafted on March 5, 2015.

Although ISE100 courses averaged higher enrollment counts, in Fall 2015, ISE100 was phased out of the UNM remedial course catalog and has since been replaced by a course series of ENGL 100s.

ENGL 099 Average Completion Rate



15.5% of students enrolled in ENGL099 withdrew, 61.0% passed with remedial credit, and 23.5% of students enrolled did not earn credit.

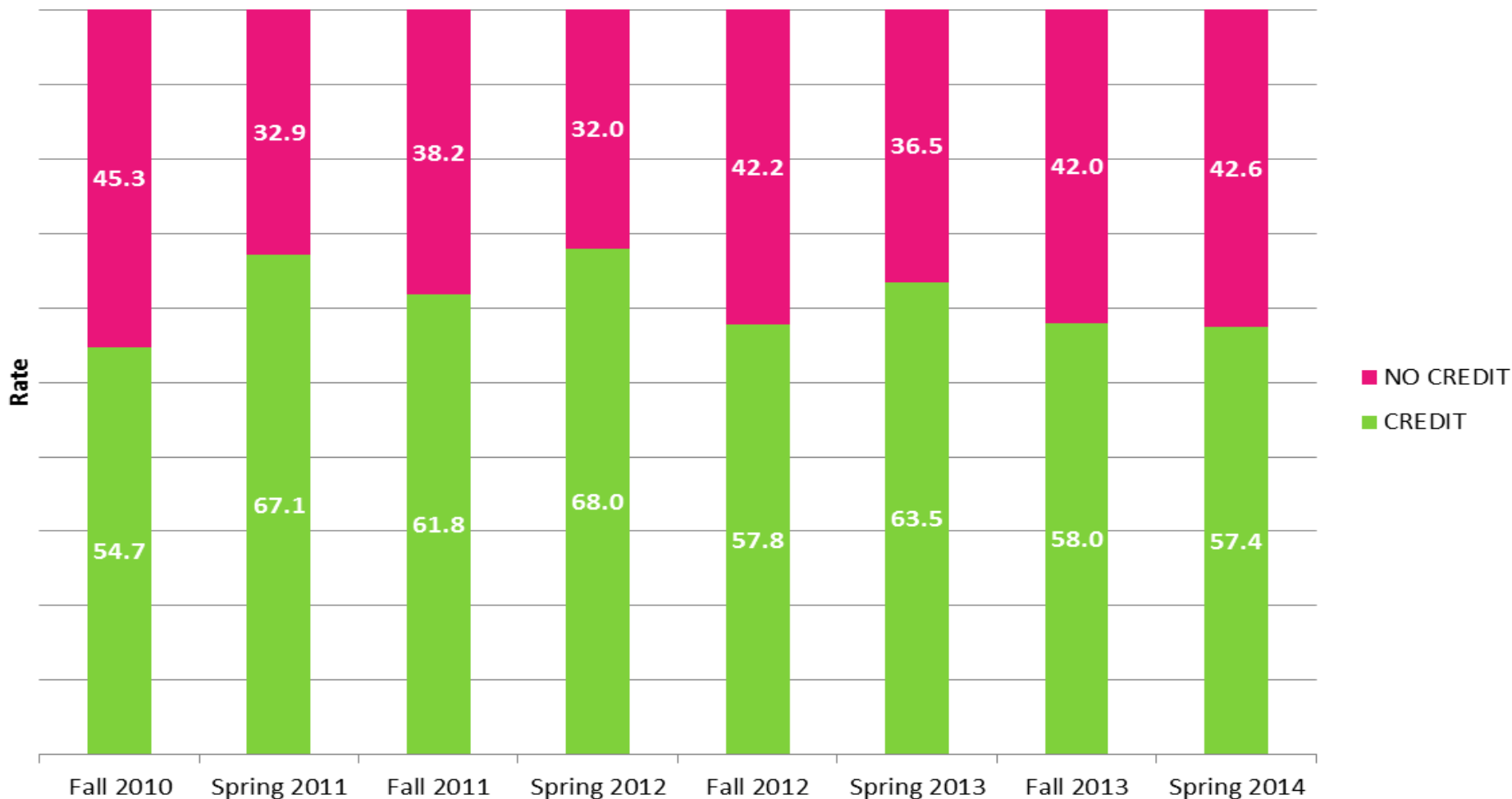
The overall completion rate of students receiving 'Remedial Credit' or 'No Credit' in ENGL099 and who did not withdraw was, 72.4%.

Source: Office of Institutional Research, UNM Gallup Campus. Drafted on March 5, 2015.

UNM Gallup 'Final Grade' by Course Identification, where Engl099 success rate is based on \geq RCR in Engl 99 developmental course divided by the total # receiving a final grade of remedial credit or no credit minus all withdrawals.

ENGL 099 Completion Rates

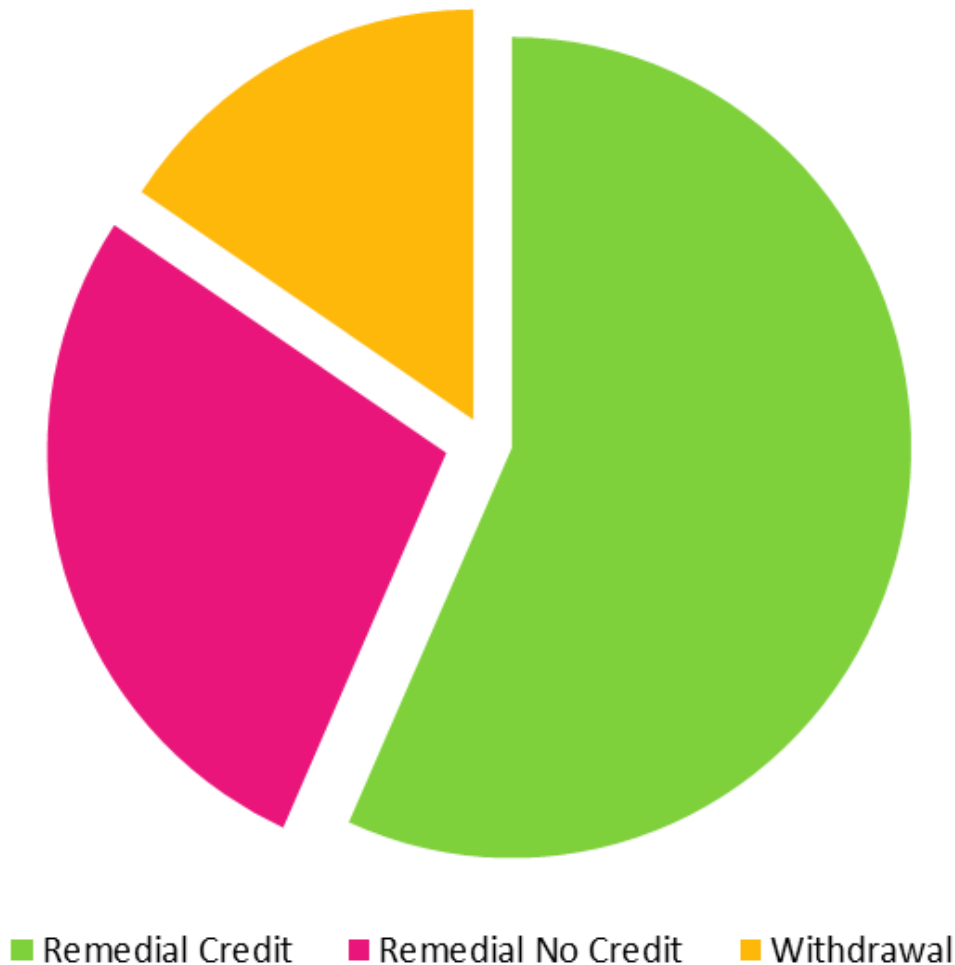
Fall 2010 - Spring 2014



Source: Office of Institutional Research, UNM Gallup Campus. Drafted on March 5, 2015.

This graph presents data concerning Credit / No Credit (final grade) trends in ENGL099, which is a gateway remedial course required for students who do not test into ISE100 through placement exam. This is a non credit-bearing course.

ISE 100 Average Completion Rate



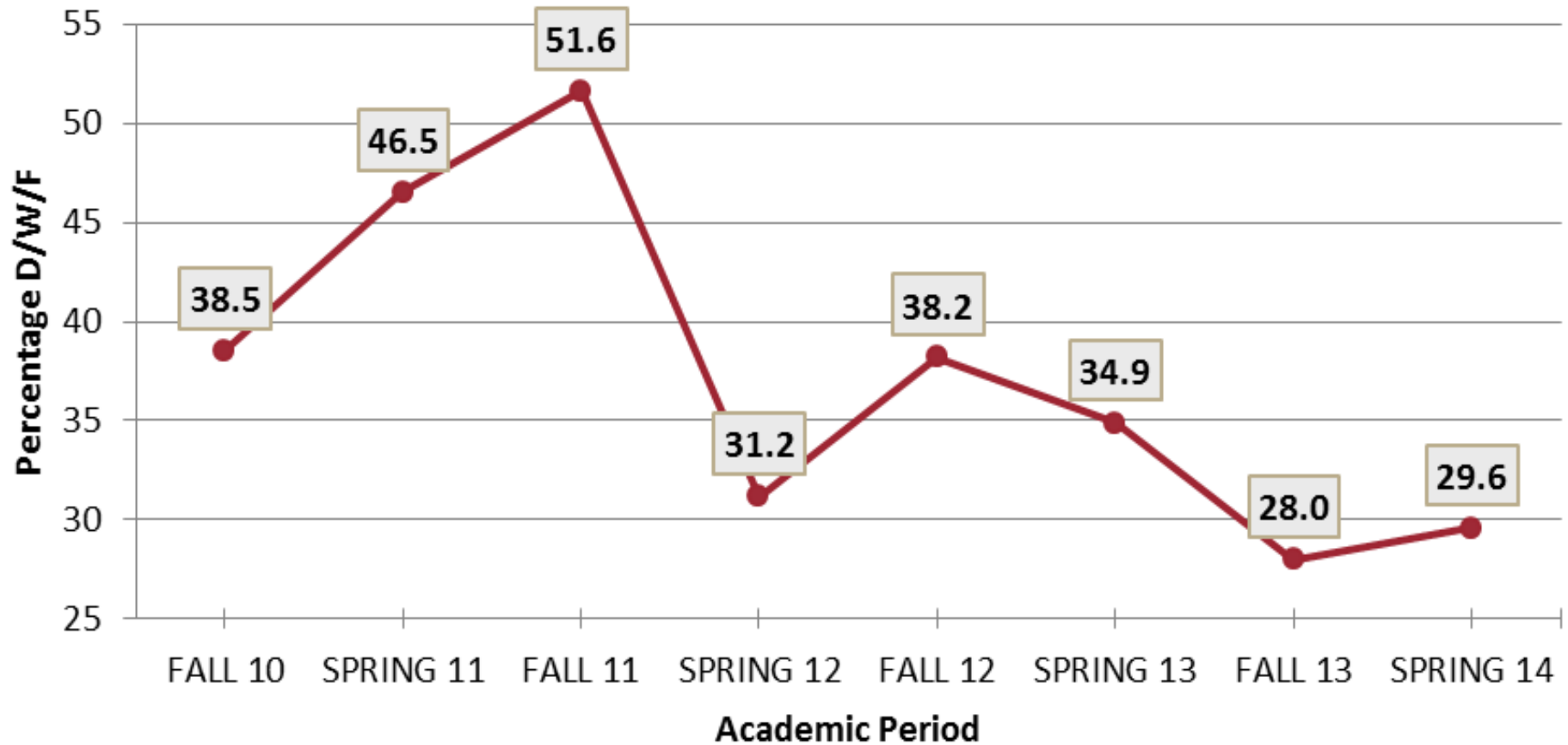
The average completion rate for students enrolled in ISE100 who passed with remedial credit was 56.7%.

15.5% of students withdrew after the 21-day census date and 27.7% earned no credit.

The overall credit or no credit completion rate of ISE100 students who did not withdraw was 67.2%.

Source: Office of Institutional Research, UNM Gallup Campus. Drafted on March 5, 2015. UNM Gallup Final Grade by Course Identification, where Engl099 success rate is based on \geq RCR in Engl 99 developmental course/total receiving a final grade of remedial credit or no credit-all withdrawals.

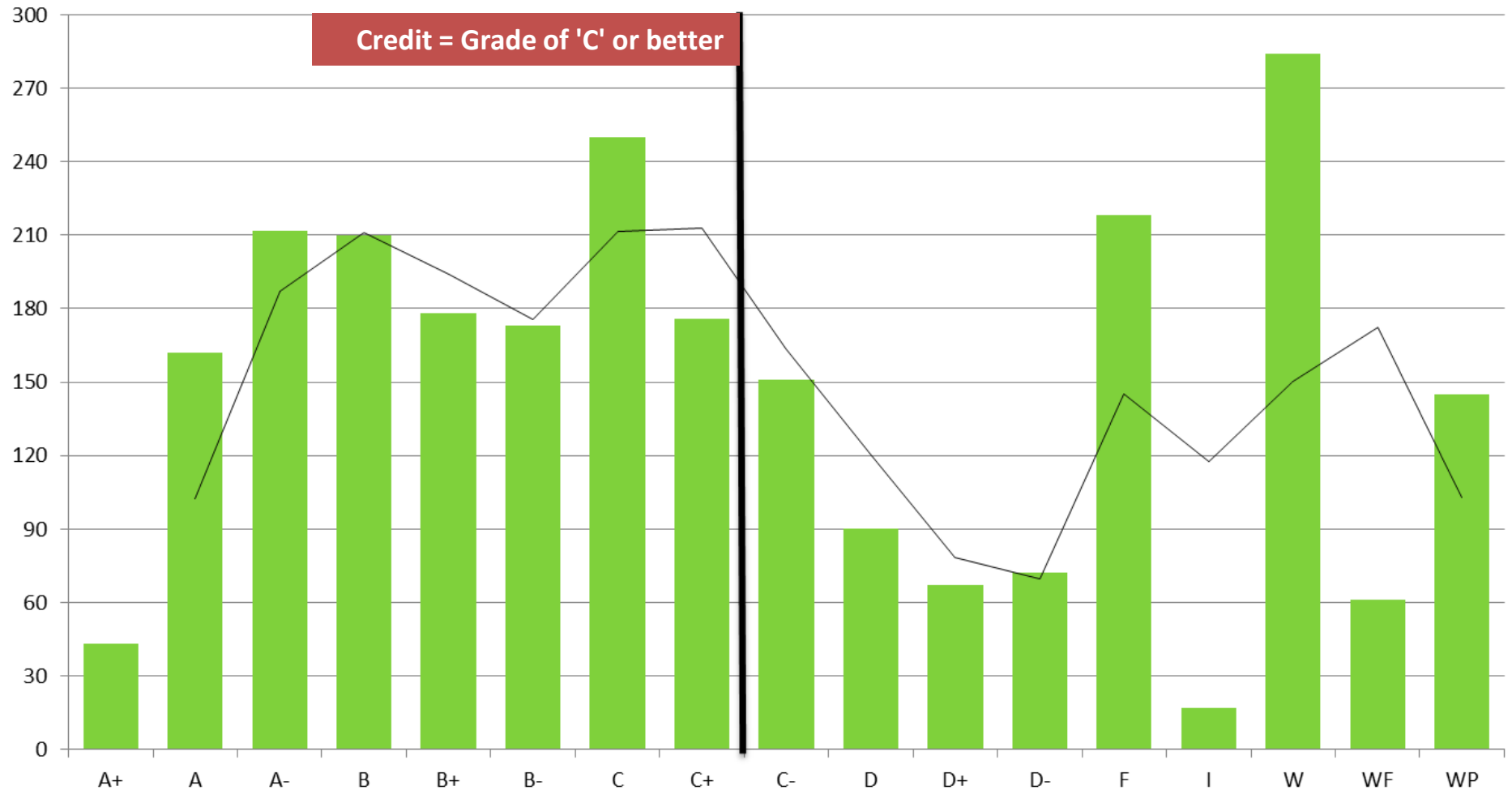
English 101 D/W/F Rates, by Term Fall 2010 - Spring 2014



Source: Office of Institutional Research, UNM Gallup Campus. Drafted on March 5, 2015.

The ENGL 101 Drop/Withdrawal/Failure rate has significantly decreased over the past 3 years from 51.6 in fall 2011 to 29.6 in spring 2014. This means 70% of students registered and enrolled in ENGL 101 persisted through the entire term. A grade of 'C' or better is required to actually pass.

ENGL 101 Grade Frequency Trend, Fall 2010 - Spring 2014



Source: Office of Institutional Research, UNM Gallup Campus. Drafted on March 5, 2015.

The average completion rate in ENGL 101 is 56.0%. Almost 20% of students tend to withdraw after the census date and a quarter of students earn grades below a 'C.'
Post-spring 2014, ENGL 101 was replaced with ENGL110.