

Transitional Studies Data: Brief Overview

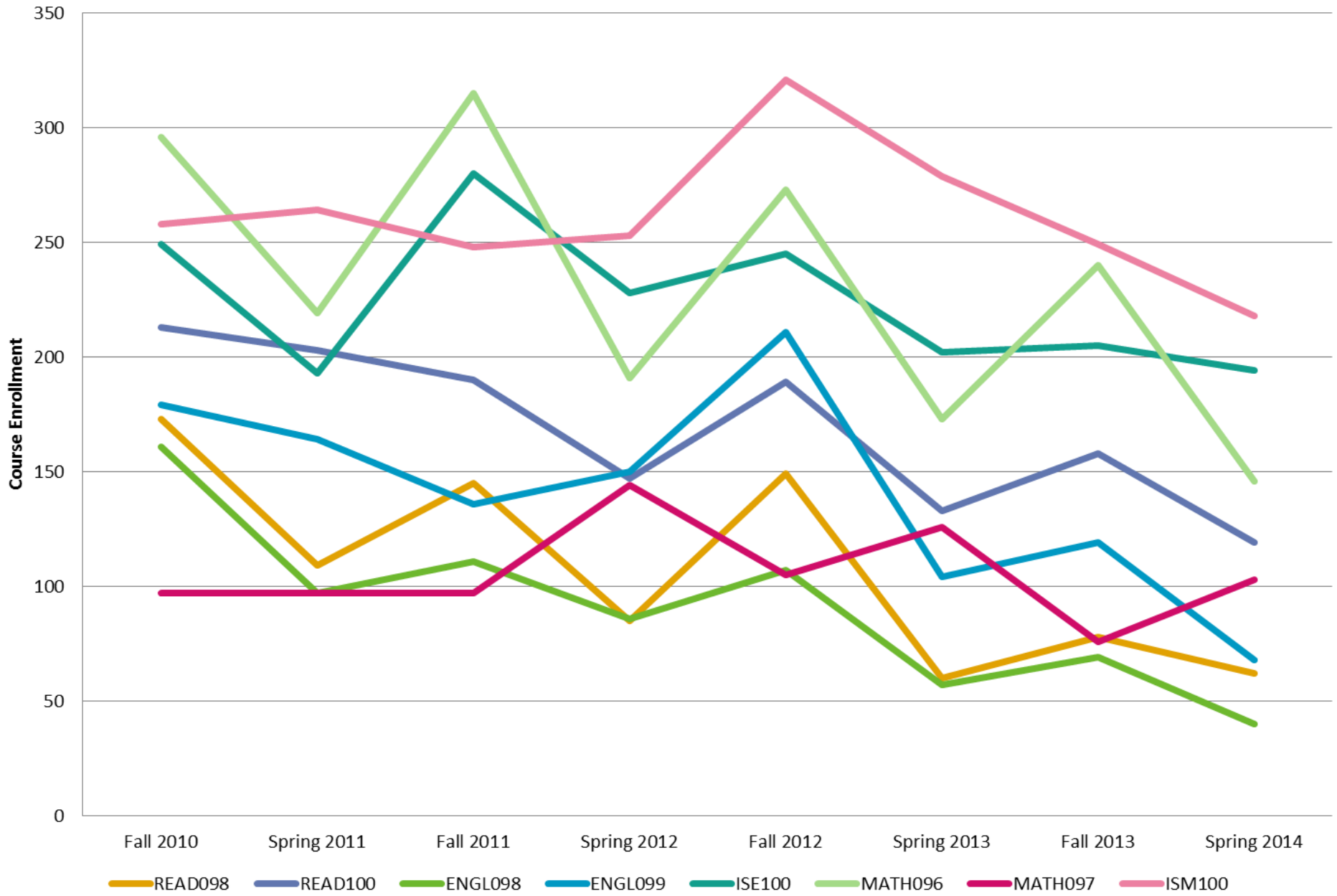
Prepared for:
UNM Gallup Campus

Prepared by:
Marie Julienne,
Institutional Researcher

Drafted:
March 5, 2015



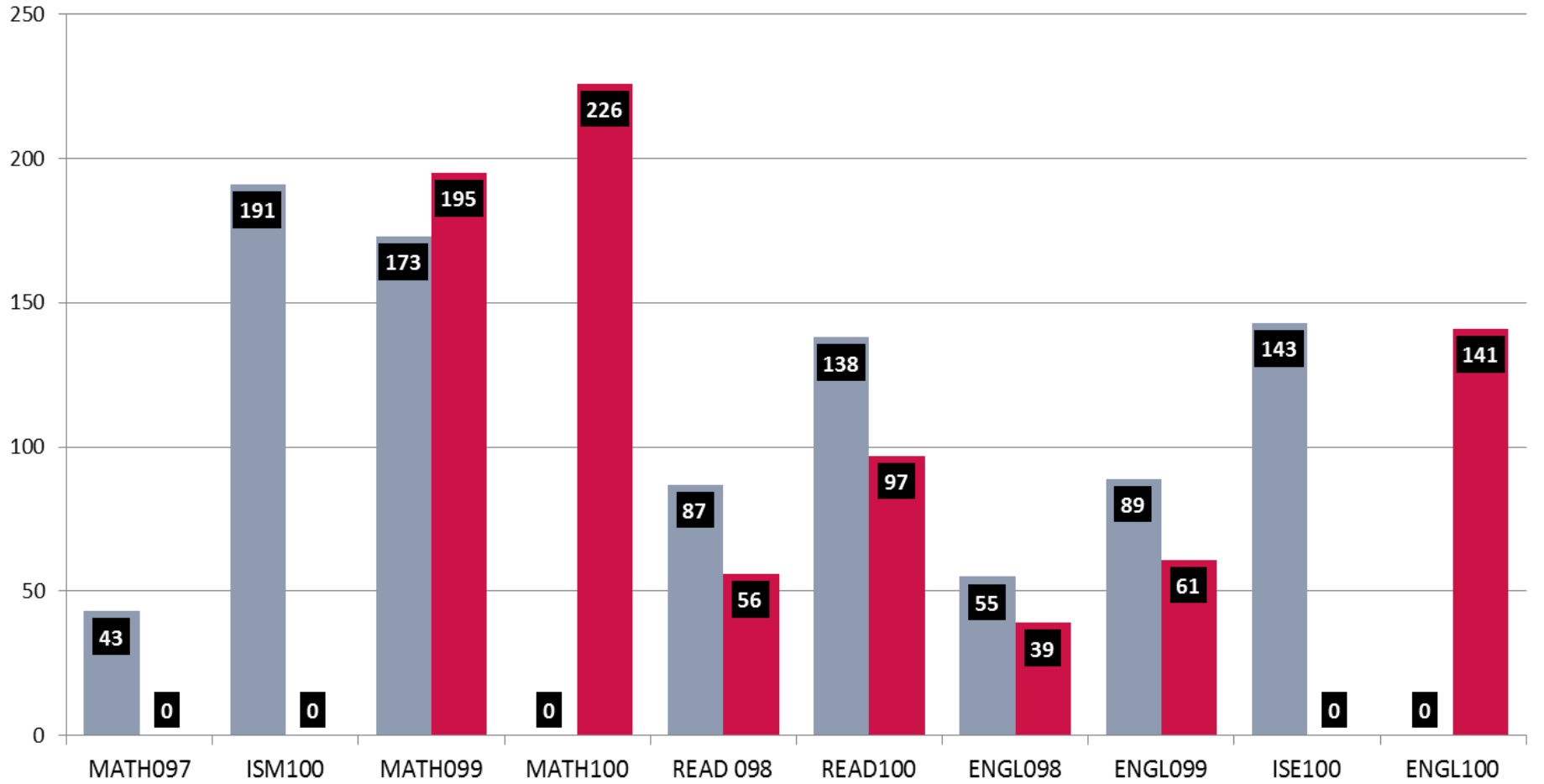
Dynamic Remedial Trends, by Course and Term



Developmental Course Enrollments, AY 2014-15

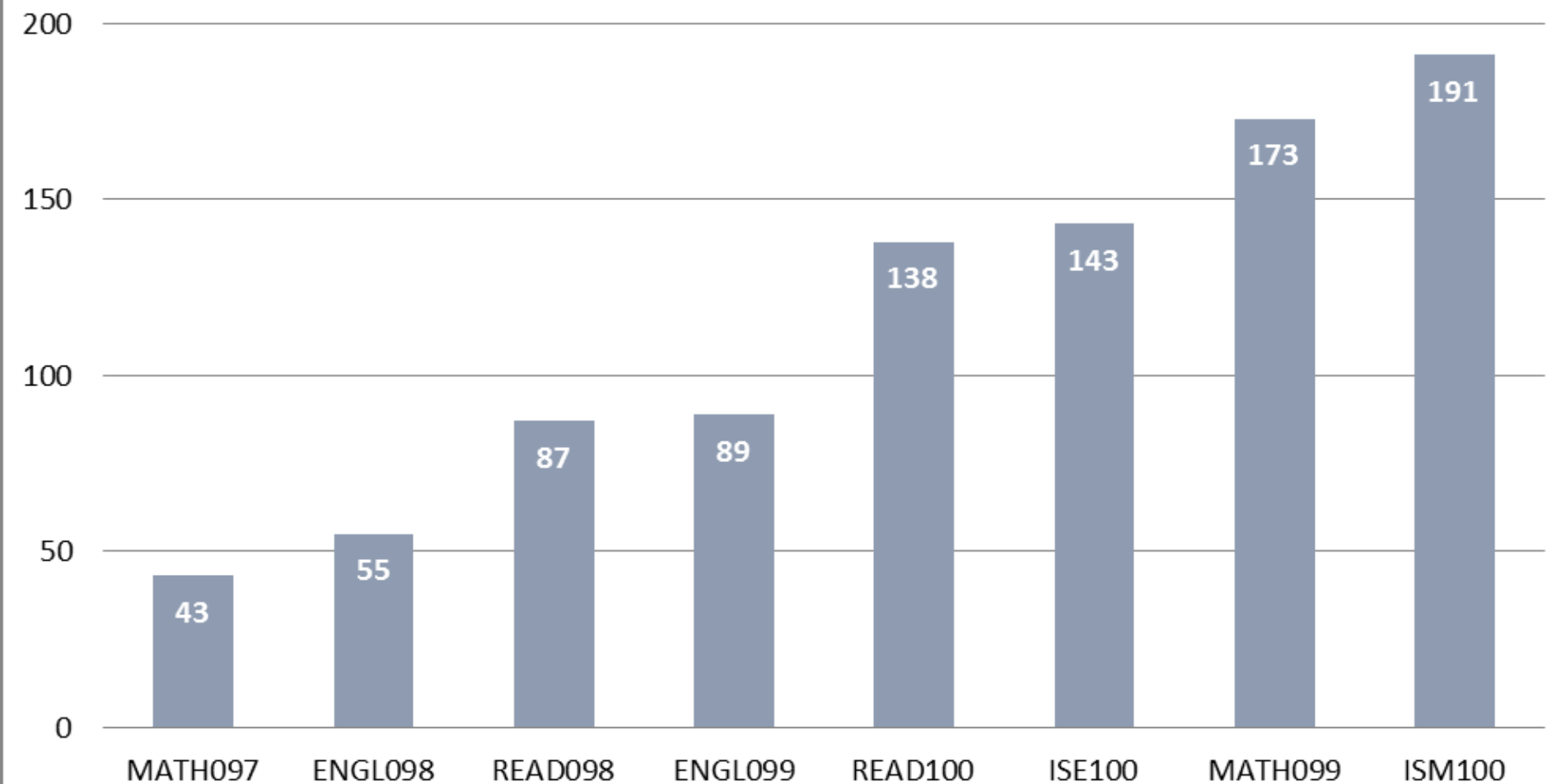
Fall 2014

Spring 2015



Source: Office of Institutional Research, UNM Gallup Campus. Drafted on March 5, 2015.

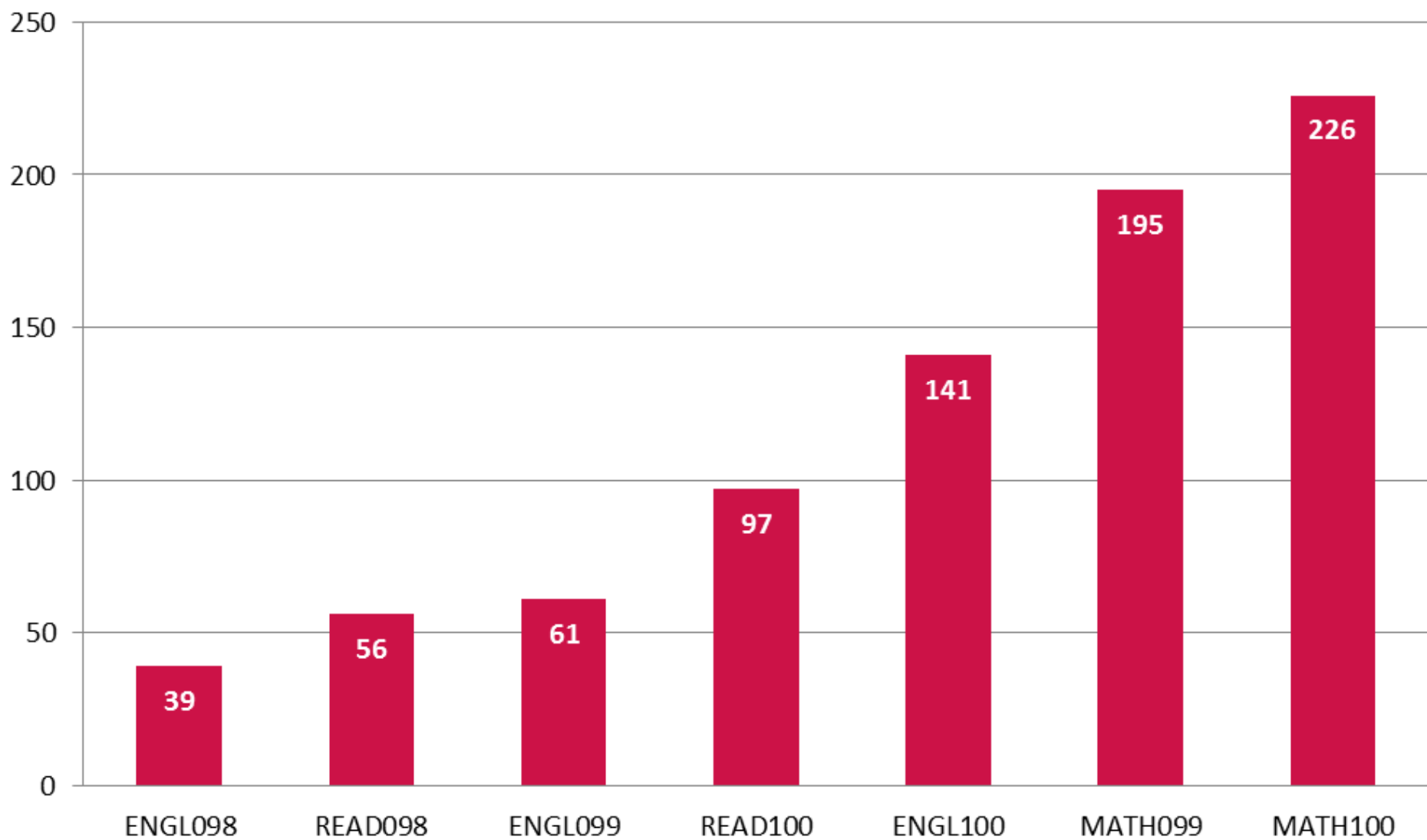
Developmental Education Course Enrollments - Fall 2014



Source: Office of Institutional Research, UNM Gallup Campus. Drafted on March 5, 2015.

In Fall 2014, 11.7 % of total course enrollments at the Gallup campus were in developmental/remedial courses; ISE100 had 143 course enrollments, but was phased out of the UNM master course catalog in Fall 2015 and replaced with ENGL 100.

Developmental Education Course Enrollments - Spring 2015



Source: Office of Institutional Research, UNM Gallup Campus. Drafted on March 5, 2015.